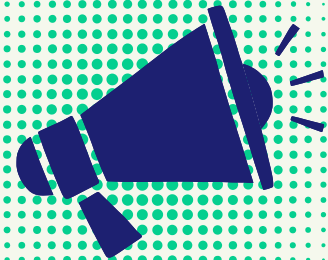


2025



SPONSOR GUIDE

UPDATED 12/03/24



An enhanced way to
NETWORK, ADVERTISE & SPEAK
about your business or organization

JANUARY 24, 2025

Prayer Breakfast



Stratigos Banquet Centre

Anticipated attendance: 250-300

\$1,675 Platinum

- 8 entrance tickets w/ 1 reserved table
- Prominent Logo on all advertising
- Business brochure to each attendee
- Full page program ad (5x8)
- \$700 in flexible advertising credit*

\$995 Gold

- 6 entrance tickets w/ 1 reserved table
- Logo on all advertising
- Full page program ad (5x8)
- \$400 in flexible advertising credit*

\$775 Silver

- 3 entrance tickets
- Logo on all advertising
- Half page program ad (5x4)
- \$300 in flexible advertising credit*

\$485 Bronze

- 2 entrance tickets
- Name (text) on all advertising
- \$200 in flexible advertising credit*

\$29 Student Sponsor

- Allows 1 student to attend program free of charge
- Name (text) listed in program

\$75 Program Ad \$150

- Half Page Ad=5x4
- Full Page Ad=5x8
- JPEG image preferred

The Westmoreland County Chamber of Commerce does not guarantee the anticipated attendance at each event.

All sponsorships are first come, first serve.

Sponsorships must be paid in full before any sponsor benefit can be utilized, including being placed on the promotional flyer.

**Advertising credit must be used within 1 year of the event and is pending an active chamber membership.*

FEBRUARY 13, 2025

State of the County



Stratigos Banquet Centre

Anticipated attendance: 250-300

\$1,675 Platinum

Limit of 2

- 8 entrance tickets w/ 1 reserved table
- 5 minutes to speak at podium
- Prominent logo on all advertising
- Full page program ad (5x8)
- \$700 in flexible advertising credit*

\$995 Gold

- 6 entrance tickets w/ 1 reserved table
- Logo on all advertising
- Full page program ad (5x8)
- \$400 in flexible advertising credit*

\$775 Silver

- 3 entrance tickets
- Logo on all advertising
- Half page program ad (5x4)
- \$300 in flexible advertising credit*

\$485 Bronze

- 2 entrance tickets
- Name (text) on all advertising
- \$200 in flexible advertising credit*

\$75 Half Page Program Ad

- HalfPage Ad=5x4
- JPEG image preferred

\$150 Full Page Program Ad

- Full Page Ad=5x8
- JPEG image preferred

The Westmoreland County Chamber of Commerce does not guarantee the anticipated attendance at each event.

All sponsorships are first come, first serve.

Sponsorships must be paid in full before any sponsor benefit can be utilized, including being placed on the promotional flyer.

**Advertising credit must be used within 1 year of the event and is pending an active chamber membership.*

TBD (ANTICIPATED MAY 2025)

State of the State



Stratigos Banquet Centre

Anticipated attendance: 250-300

\$1,675 Platinum

Limit of 2

- 8 entrance tickets w/ 1 reserved table
- 5 minutes to speak at podium
- Prominent logo on all advertising
- Full page program ad (5x8)
- \$700 in flexible advertising credit*

\$995 Gold

- 6 entrance tickets w/ 1 reserved table
- Logo on all advertising
- Full page program ad (5x8)
- \$400 in flexible advertising credit*

\$775 Silver

- 3 entrance tickets
- Logo on all advertising
- Half page program ad (5x4)
- \$300 in flexible advertising credit*

\$485 Bronze

- 2 entrance tickets
- Name (text) on all advertising
- \$200 in flexible advertising credit*

\$75 Half Page Program Ad

- HalfPage Ad=5x4
- JPEG image preferred

\$150 Full Page Program Ad

- Full Page Ad=5x8
- JPEG image preferred

The Westmoreland County Chamber of Commerce does not guarantee the anticipated attendance at each event.

All sponsorships are first come, first serve.

Sponsorships must be paid in full before any sponsor benefit can be utilized, including being placed on the promotional flyer.

**Advertising credit must be used within 1 year of the event and is pending an active chamber membership.*

APRIL 23, 2025

Staff Appreciation



Live! Casino

Anticipated attendance: 250-300

\$1,675 Platinum

Limit of 2

- 8 entrance tickets w/ 1 reserved table
- 5 minutes to speak at podium
- Prominent logo on all advertising
- Full page program ad (5x8)
- \$700 in flexible advertising credit*

\$995 Gold

- 6 entrance tickets w/ 1 reserved table
- Logo on all advertising
- Full page program ad (5x8)
- \$400 in flexible advertising credit*

\$775 Silver

- 3 entrance tickets
- Logo on all advertising
- Half page program ad (5x4)
- \$300 in flexible advertising credit*

\$485 Bronze

- 2 entrance tickets
- Name (text) on all advertising
- \$200 in flexible advertising credit*

Basket Sponsor

- Provide a basket for the raffle
- Name listed in program
- Name called out during raffle

\$75 Half Page \$150 Full Page Program Ad

- Half Page Ad=5x4
- Full Page Ad=5x8
- JPEG image preferred

The Westmoreland County Chamber of Commerce does not guarantee the anticipated attendance at each event.

All sponsorships are first come, first serve.

Sponsorships must be paid in full before any sponsor benefit can be utilized, including being placed on the promotional flyer.

**Advertising credit must be used within 1 year of the event and is pending an active chamber membership.*

TBD



Business Over Breakfast



TBD

Anticipated attendance: 60-80

\$600

Platinum

Limit of 1 **September=Sold**

- 2 entrance tickets
- Vendor table at event
- 5 minutes to speak at podium
- Prominent logo on all advertising
- 5x8 print ad at event
- \$200 in flexible advertising credit*

\$300

Gold

Limit of 3

- 1 entrance ticket
- Vendor table at event
- Logo on all advertising
- 5x4 print ad at event
- \$100 in flexible advertising credit*

- Quarter 1: February 27
Speaker TBD
Location: TBD

- Quarter 2: May 13
Speaker TBD
Location: TBD

- Quarter 3: September 18
Speaker TBD
Location: TBD

- Quarter 4: October 23
Speaker TBD
Location: TBD

The Westmoreland County Chamber of Commerce does not guarantee the anticipated attendance at each event.

All sponsorships are first come, first serve.

Sponsorships must be paid in full before any sponsor benefit can be utilized, including being placed on the promotional flyer.

**Advertising credit must be used within 1 year of the event and is pending an active chamber membership.*

MARCH 20, 2025

Women of Westmoreland

Spring Luncheon



TBD

Anticipated attendance: 75-100

\$1,000 Platinum

Limit of 2

SOLD OUT

- 6 entrance tickets w/ 1 reserved table
- 5 minutes to speak at podium
- Prominent logo on all advertising
- 5x8 print ad at event
- \$400 in flexible advertising credit*

\$675 Gold

- 4 entrance tickets
- Logo on all advertising
- 5x8 print ad at event
- \$300 in flexible advertising credit*

\$475 Silver

- 2 entrance tickets
- Logo on all advertising
- 5x4 print ad at event
- \$300 in flexible advertising credit*

\$225 Bronze

- Name (text) on all advertising
- \$200 in flexible advertising credit*

The Westmoreland County Chamber of Commerce does not guarantee the anticipated attendance at each event.

All sponsorships are first come, first serve.

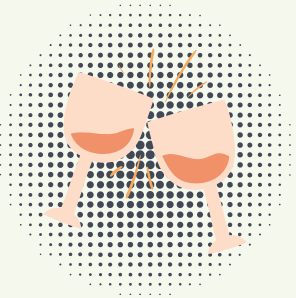
Sponsorships must be paid in full before any sponsor benefit can be utilized, including being placed on the promotional flyer.

*Advertising credit must be used within 1 year of the event and is pending an active chamber membership.

JUNE, 2025

Women of Westmoreland

Social Event



TBD

Anticipated attendance: 100-125

\$1,000 Platinum

Limit of 2

- 6 entrance tickets w/ 1 reserved table
- 5 minutes to speak at podium
- Prominent logo on all advertising
- 5x8 print ad at event
- \$400 in flexible advertising credit*

\$675 Gold

- 4 entrance tickets
- Logo on all advertising
- 5x8 print ad at event
- \$300 in flexible advertising credit*

\$475 Silver

- 2 entrance tickets
- Logo on all advertising
- Half page program ad (5x4)
- \$300 in flexible advertising credit*

\$225 Bronze

- Name (text) on all advertising
- \$200 in flexible advertising credit*

The Westmoreland County Chamber of Commerce does not guarantee the anticipated attendance at each event.

All sponsorships are first come, first serve.

Sponsorships must be paid in full before any sponsor benefit can be utilized, including being placed on the promotional flyer.

**Advertising credit must be used within 1 year of the event and is pending an active chamber membership.*

NOVEMBER, 2025

Women of Westmoreland

Evening Event



TBD

Anticipated attendance: 175-225

\$1,675 Platinum

Limit of 2

- 8 entrance tickets w/ 1 reserved table
- 5 minutes to speak at podium
- Prominent logo on all advertising
- 5x8 print ad at event
- \$700 in flexible advertising credit*

\$995 Gold

- 6 entrance tickets w/ 1 reserved table
- Logo on all advertising
- 5x8 print ad at event
- \$400 in flexible advertising credit*

\$775 Silver

- 3 entrance tickets
- Logo on all advertising
- 5x4 print ad at event
- \$300 in flexible advertising credit*

\$485 Bronze

- 2 entrance tickets
- Name (text) on all advertising
- \$200 in flexible advertising credit*

The Westmoreland County Chamber of Commerce does not guarantee the anticipated attendance at each event.

All sponsorships are first come, first serve.

Sponsorships must be paid in full before any sponsor benefit can be utilized, including being placed on the promotional flyer.

**Advertising credit must be used within 1 year of the event and is pending an active chamber membership.*

JUNE 2, 2025



Golf Classic



Ligonier Country Club

Anticipated attendance: 140-160

\$4,550 Title Sponsor

Limit of 1

- "Presented by" + logo on all advertising
- Registration for 8 golfers
- 5 minutes to speak at podium
- Deluxe tee sign
- Logo on golf cart insert
- Full page program ad (5x8)
- \$1500 in flexible advertising credit*

\$3,275 Eagle Sponsor

Limit of 1

- Logo on all advertising
- Registration for 8 golfers
- Deluxe tee sign
- Logo on golf cart insert
- Full page program ad (5x8)
- \$600 in flexible advertising credit*

\$2,275 Birdie Sponsor

Limit of 1

- Logo on all advertising
- Registration for 4 golfers
- Deluxe tee sign
- Logo on golf cart insert
- Half page program ad (5x8)
- \$300 in flexible advertising credit*

\$1,525 Par Sponsor

- Registration for 4 golfers
- Logo on all advertising
- Name listed in program
- Standard tee sign
- \$200 in flexible advertising credit*

\$525* Breakfast Sponsor Lunch Sponsor Cart Sponsor Beverage Cart

- Name listed in program
- Standard tee sign @ corresponding station

\$325* Snack Sponsor Putting Contest

- Name listed in program
- Standard tee sign @ corresponding station

The Westmoreland County Chamber of Commerce does not guarantee the anticipated attendance at each event.

All sponsorships are first come, first serve.

Sponsorships must be paid in full before any sponsor benefit can be utilized, including being placed on the promotional flyer.

**Advertising credit must be used within 1 year of the event and is pending an active chamber membership.*

OCTOBER 9, 2025

Business Meeting & Awards



TBD

Anticipated attendance: 200-250

\$2,600 Platinum

Limit of 4

- 8 entrance tickets w/ 1 reserved table
- Presentation of award to winner on stage
- Prominent logo on all advertising
- Full page program ad (5x8)
- \$800 in flexible advertising credit*

\$1,275 Gold

- 6 entrance tickets w/ 1 reserved table
- Logo on all advertising
- Full page program ad (5x8)
- \$550 in flexible advertising credit*

\$575 Silver

- 3 entrance tickets
- Logo on all advertising
- Half page program ad (5x4)
- \$300 in flexible advertising credit*

\$350 Bronze

- 2 entrance tickets
- Name (text) on all advertising
- \$200 in flexible advertising credit*

\$75 Half Page Program Ad

- Half Page Ad=5x4
- JPEG image preferred

\$150 Full Page Program Ad

- Full Page Ad=5x8
- JPEG image preferred

The Westmoreland County Chamber of Commerce does not guarantee the anticipated attendance at each event.

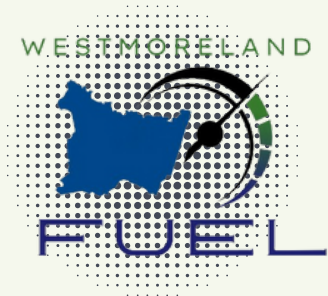
All sponsorships are first come, first serve.

Sponsorships must be paid in full before any sponsor benefit can be utilized, including being placed on the promotional flyer.

**Advertising credit must be used within 1 year of the event and is pending an active chamber membership.*

Specialty Sponsor: FUEL

Annual Program Sponsorship



**Westmoreland
County
Chamber of
Commerce
Young
Professionals
Group**

\$4,000 2025 FUEL PLATINUM Sponsor

- Largest logo on all FUEL Advertising
- Up to 3 minute intro/elevator pitch @each FUEL event
- Up to 6 FUEL annual memberships included
- \$500 in flexible advertising credit*

\$2,000 2025 FUEL GOLD Sponsor

- Medium Logo on all FUEL Advertising
- Mention at each FUEL event
- Up to 4 FUEL annual memberships included
- \$400 in flexible advertising credit*

\$1,000 2025 FUEL SILVER Sponsor

- Small Logo on all FUEL Advertising
- Mention at each FUEL event
- Up to 2 FUEL annual memberships included
- \$200 in flexible advertising credit*

*The Westmoreland County Chamber of Commerce does not guarantee the anticipated attendance at each event.
All sponsorships are first come, first serve.*

Sponsorships must be paid in full before any sponsor benefit can be utilized, including being placed on the promotional flyer.

**Advertising credit must be used within 1 year of the event and is pending an active chamber membership.*

Additional Specialty Sponsors

Annual Program Sponsorship



\$4,000 2025 BASH Sponsor

- Logo on all BASH graphics
- Guaranteed 1 BASH at location
- Mention at ALL BASH events
- Table at annual vendor show
- \$500 in flexible advertising credit*



\$2,000 2025 Leadership Series Sponsor

- Logo on all Series Advertising
- Mention at each session (approx. 5)
- Up to 2 attendees at series included
- \$400 in flexible advertising credit*

The Westmoreland County Chamber of Commerce does not guarantee the anticipated attendance at each event.

All sponsorships are first come, first serve.

Sponsorships must be paid in full before any sponsor benefit can be utilized, including being placed on the promotional flyer.

**Advertising credit must be used within 1 year of the event and is pending an active chamber membership.*

Sponsor Registration Form



Company: _____

CONTACT PERSON: _____

Event Name: _____

EVENT LEVEL: _____ AMOUNT: _____

PAYMENT: SPONSORSHIP PLEDGE* PLEASE INVOICE*
*MUST BE PAID WITHIN 2 MONTHS OF EVENT

| | | |
|----------------------------|---------------------------------------------------------------------------------------------------------------------------------------------------------------------------|---------------------------------------------------------------------------------------------------------------------------------------------------------------------------------------------------------------------------------|
| <p># Tickets _____</p> | <p>Attendee: _____ Attendee: _____ Attendee: _____ Attendee: _____ Attendee: _____ Attendee: _____ Attendee: _____ Attendee: _____</p> | <p>Email: _____ Email: _____ Email: _____ Email: _____ Email: _____ Email: _____ Email: _____ Email: _____</p> |
| <p>Included Ad</p> | <p>_____ Full Page=5Wx8H _____ Half Page=5Wx4H _____ Business Card=3Wx2H</p> | <p>Please Send jpeg to lindsay@westmorelandchamber.com</p> <p>Ad copy deadline: _____</p> |
| <p>Ad Credit</p> | <p>\$ _____</p> | <p>Options:</p> <ul style="list-style-type: none"> • Newsletter • Member Spotlight • LED Board • Web Site Ad <p>Credit to be used within 1 year of event and w/ active membership</p> |
| <p>Additional Benefits</p> | | |

The Westmoreland County Chamber of Commerce does not guaranteed the attendance at each event.

All sponsorships are first come, first serve.

Sponsorships must be paid in full before any sponsor benefit can be utilized, including being placed on the promotional flyer.

INTERNAL USE ONLY: I: _____ PD _____ BT: _____ TY _____